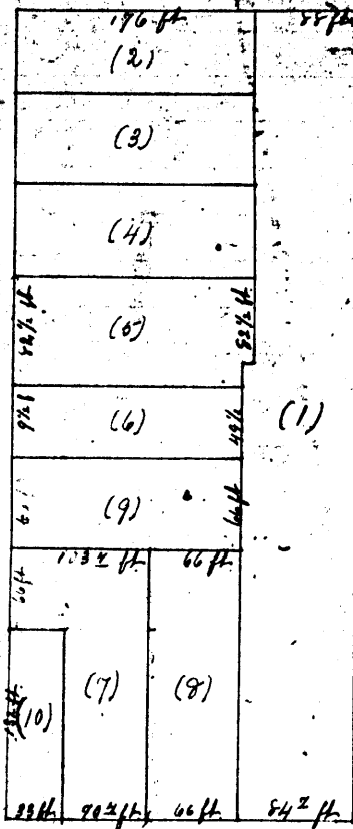


470

1122-35

Filed for Record November 20th A.D. 1888 at 12 1/2 o'clock P.M.

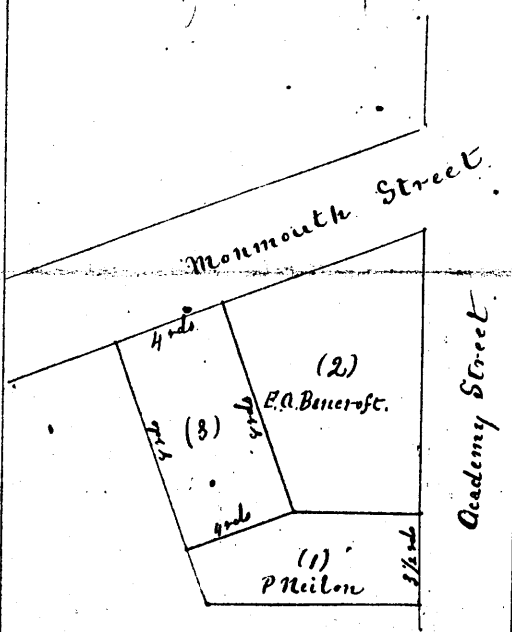


Plat of the Subdivision of Lots 5, 6, 7 & 8 of the Subdivision of Lots 9 and 10 Schenck's Addition to the City of Galoisburg.

Platted June 1st 1888  
 Wm. G. Davis  
 County Surveyor

1122-36

Filed for Record November 20th A.D. 1888 at 1 1/2 o'clock P.M.

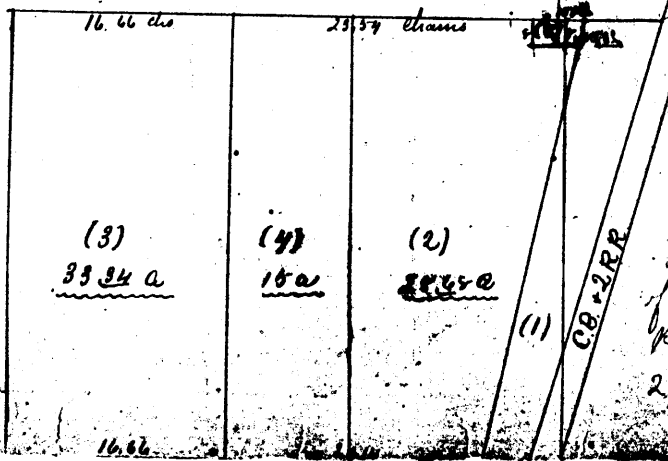


Plat of the Subdivision of the S 1/2 of the Section 22 to the City of Galoisburg.

Platted June 1st 1888  
 Wm. G. Davis  
 County Surveyor

1122-38

Filed for Record November 20th A.D. 1888 at 12 o'clock P.M.



Plat of the Subdivision of the S 1/2 of the Section 22 to the City of Galoisburg. Platted June 1st 1888.

Wm. G. Davis  
 County Surveyor